

Taking the last mile

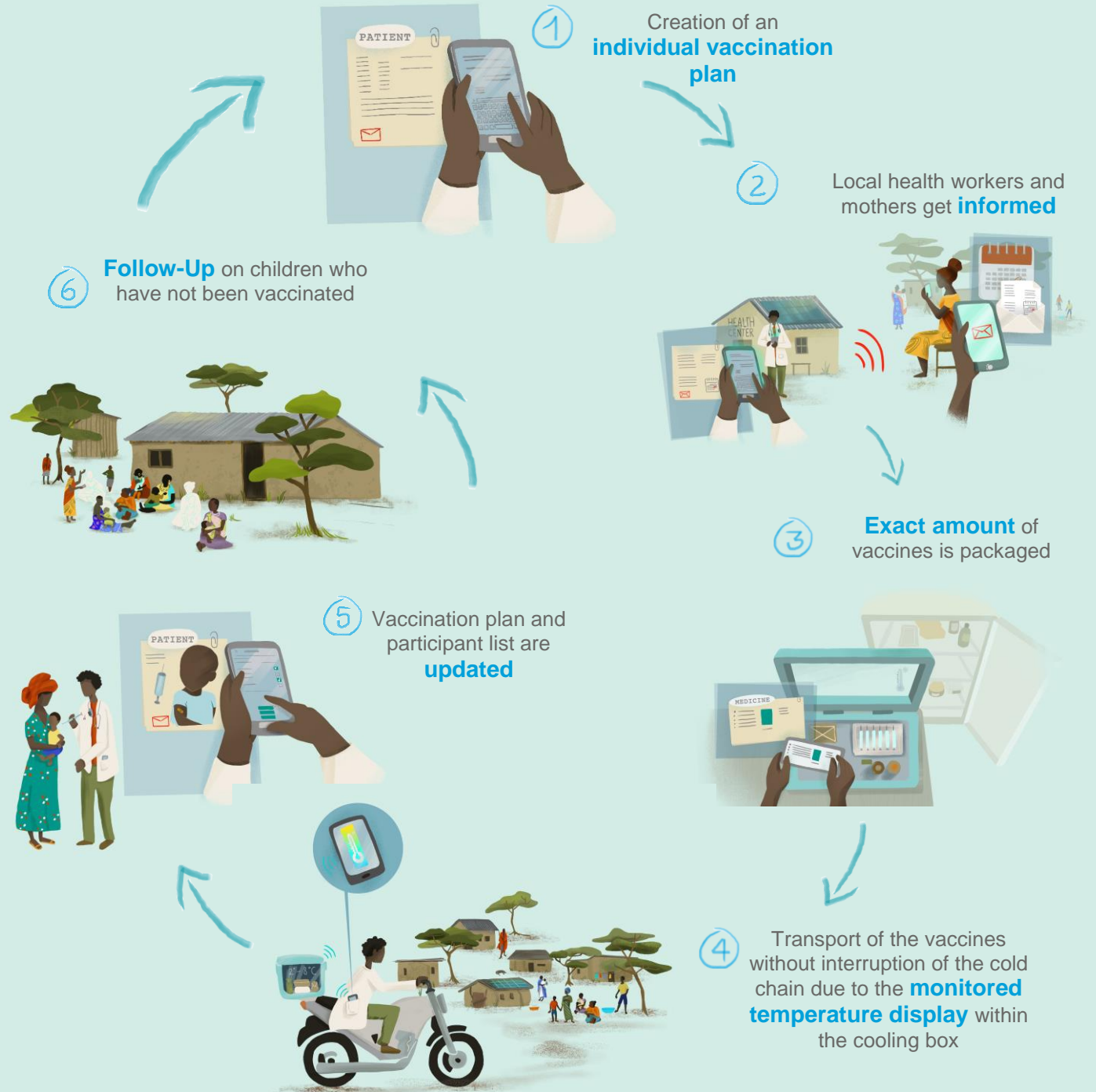
On the importance of cold chains

Many vaccines must be stored and transported refrigerated. It is important that the cold chain is not interrupted. But this is not always guaranteed, especially in remote settings in emerging and developing countries.



Over **50%** of all vaccines worldwide are lost due to interruptions in the cold chain

The digital tool emmunize starts right there. It creates vaccination plans based on national data and assists the local health workers to keep track. The vaccines are exactly packaged and vaccinated children are ticked off on a list. The major feature: the tool also indicates the temperature of the cooling boxes, which are used for the transport of the vaccines. Thus, when the vital substances are taken to remote areas, the remaining time for transport can be displayed.



From Dream to Reality

The story behind emmunize

June 2018

One of the co-founders **had a dream** (literally): "I was afraid to miss my child's vaccination appointment."

Until 30th August 2018

Submission of a first idea at the **Innovation Fund of GIZ**. Sought were innovative approaches that advance development cooperation. 120 ideas from 48 countries were received and 6 of them selected, including **emmunize**.

September 2018 – March 2019

Development of a **Minimum Viable Product (MVP)**, a first functional version of the tool. Emmunize is being tested in **6 communities in East Africa**.

22th Mai 2019

Final presentation in Bonn: emmunize **wins the Innovation Fund 2018/19!**

And now?

You come into play. We are looking for **partners & sponsors** who help us fight for a healthier world.



emmunize 

Deutsche Gesellschaft für
Internationale Zusammenarbeit (GIZ) GmbH

Registered Offices
Bonn and Eschborn, Germany

Dag-Hammarskjöld-Weg 1-5
65760 Eschborn, Germany
T +49 61 96 79-0
F +49 61 96 79-11 15

E emmunize@giz.de
I www.giz.de / www.emmunize.org
T @emmunize

giz Deutsche Gesellschaft
für Internationale
Zusammenarbeit (GIZ) GmbH